

VisualProbe x86 Simulator

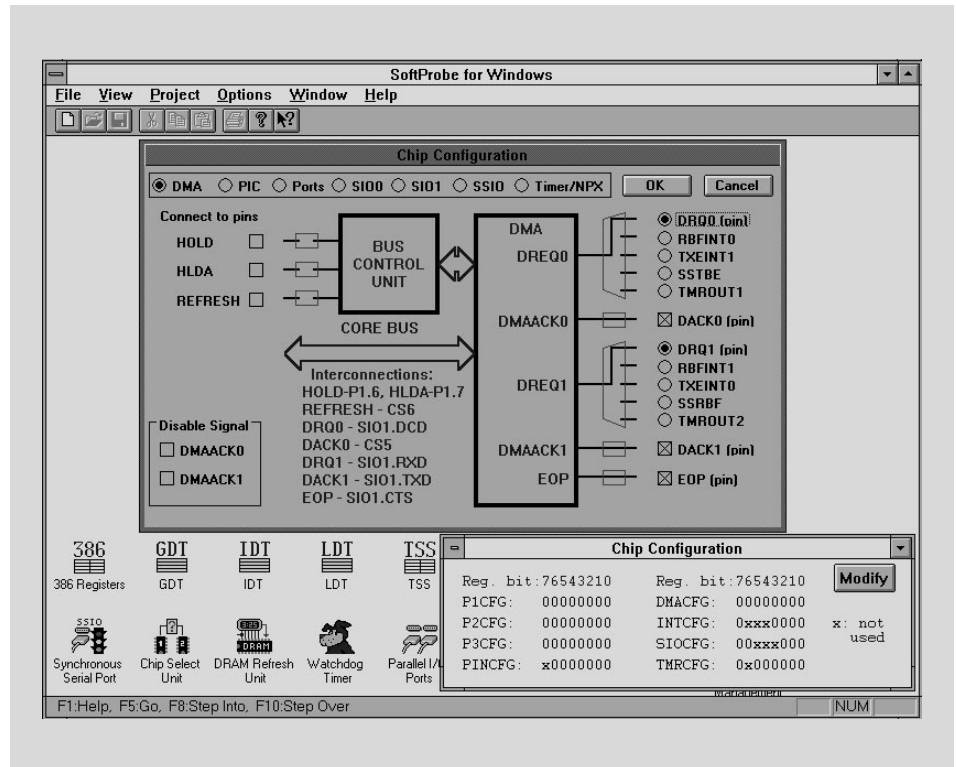
- Simulation of All Functions for Intel i386™, i486™ and Pentium® Processors
- Windows* NT, 95, 3.x Hosted
- Supports Both Real- and Protected-Mode Debugging
- Source and Symbolic Debugging for C/C++
- Extensive System-Level and Peripheral Views
- Includes I/O Device Models for PIC, PIT and PC-AT Peripherals

VisualProbe x86 Simulator is a Windows-hosted instruction- and bus-level debugger for debugging real- and protected-mode i386/i486 and Pentium processors embedded system applications.

A software simulator allows you to run and debug your applications without the need of an actual target (hardware) system. By simulating all functions of a specific processor and the I/O devices, software engineers may write and debug their code and deliver finished applications concurrent with the availability of the target hardware.

VisualProbe x86 Simulator performs program execution via software simulation. VisualProbe x86 Simulator provides i386, i486 and Pentium processor (all modes of operation) simulation at the bus level. The simulation model supports up to 4 Gbytes of simulated memory.

The VisualProbe x86 Simulator offers an unprecedented view inside an embedded processor. The program execution history is controlled by trigger registers to collect trace information in terms of CPU bus cycles, machine instructions, high-level language statements, invoked functions and program variables. The variable watch window facility allows you to monitor the values of program variables during program execution. The simulator accepts executable files in Intel OMF-86/286/386 bootloadable file format and binary format files generated by most linker/locators.



tors. C++ support is provided with managed symbols.

Features of VisualProbe x86 Simulator include source-level and symbolic debugging for C and C++, extensive system-level and peripheral views, built-in simulation of the i386, i486 and Pentium processor, simulation of PC-AT peripherals. Extensive facilities are provided for breakpoints, triggers and unlimited trace including information about instruction execution, register changes, and bus level activity.

VisualProbe x86 Simulator is available in both Standard Edition and Trial Edition form. The Trial Edition is intended to serve as a tool for evaluation and/or as an educational tool. It has been reduced in scope and capabilities when compared to the Standard Edition.

The Trial Edition may be upgraded to the Standard Edition by making a single telephone call.

HOST SYSTEMS SUPPORTED:
Windows 3.x with Win 32S,
Windows NT, and Windows 95

PROCESSORS SUPPORTED:
Intel386™, Intel486™ and Pentium®
processors

AVAILABILITY:
Now

CONTACT:
Systems & Software, Inc
18012 Cowan, Suite 100
Irvine, California 92614
Phone: (800) 788-4386
(714) 833-1700
FAX: (714) 833-1900
e-mail: sales@ssi.com
BBS: (714) 833-8152
WWW: <http://www.ssi.com>